



# PECARN

TRAINING MODULE 1

# What is PECARN?

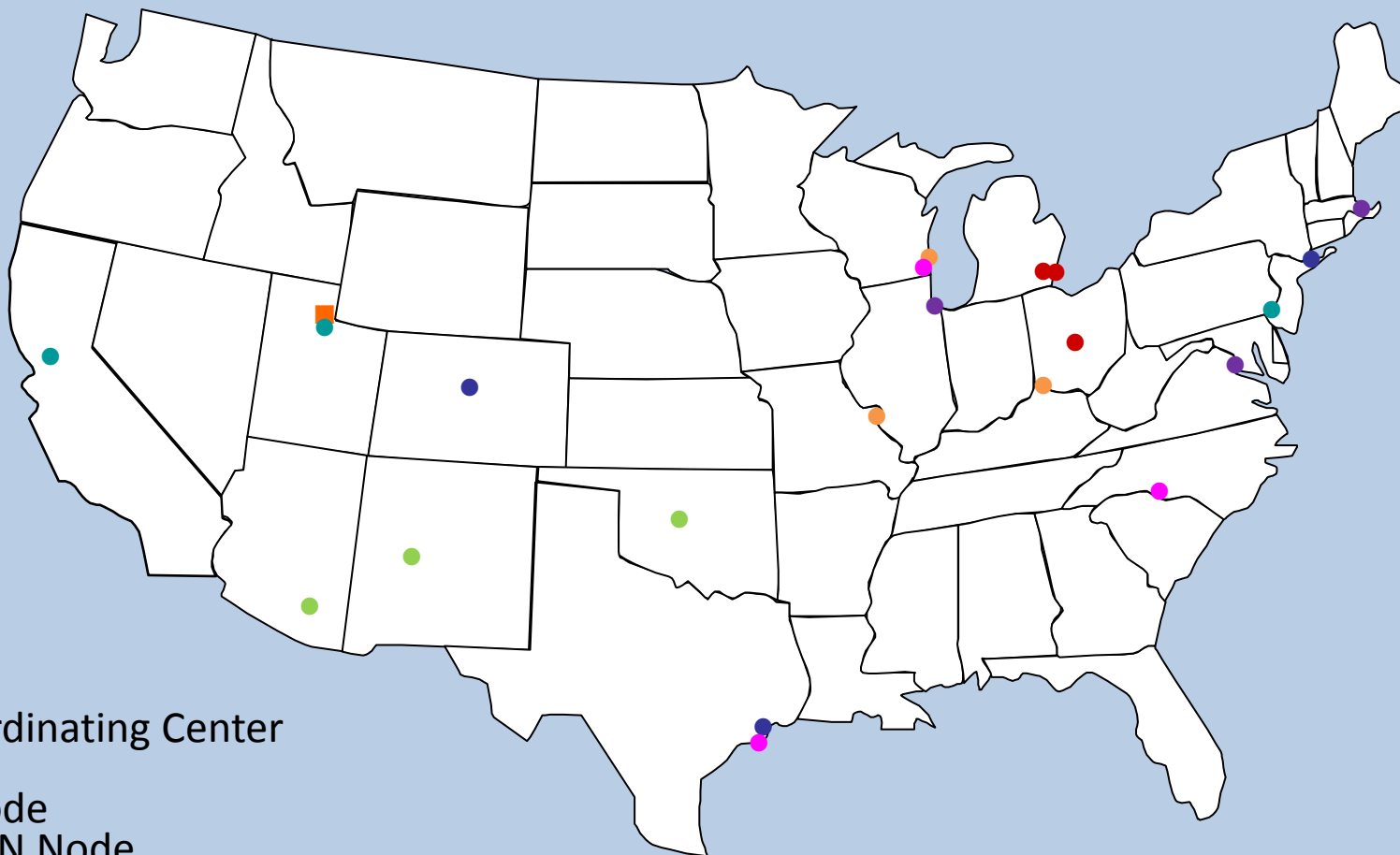


PECARN (Pediatric Emergency Care Applied Research Network) is a

**collaborative research network:**

- 18 Hospital Emergency Department Affiliates (HEDAs)
- Six Research Node Centers (RNC)
- A data coordinating center (DCC)
- Six EMS Affiliates

# The Pediatric Emergency Care Applied Research Network (PECARN)



■ = Data Coordinating Center

● = SW Node

● = PRIME Node

● = GLEMSCRN Node

● = PEM-NEWS Node

● = WBCARN Node

● = HOMERUN Node

● = CHaMP Node

PECCARN provides the **leadership** and **infrastructure** to:

- Conduct multi-center research studies
- Support research collaboration among EMSC investigators
- Promote informational exchanges between EMSC investigators and providers

# GOAL OF PECARN

Conduct meaningful and rigorous **multi-institutional research** into the prevention and management of acute **illnesses** and **injuries** in **children** and **youth** across the continuum of emergency medicine health care.

# STRENGTHS OF PECCARN



PECARN's strength is in its wide geographical and hospital representation serving over **1,100,000** ill & injured children annually and its EMS affiliates that handle 43,000 pediatric EMS runs annually.

The PECARN hospitals represent **diverse** demographic and geographic areas, such as:

- Academic hospitals
- Community hospitals
- Urban hospitals
- General hospitals
- Children's hospitals

PECARN is comprised of senior-level EMSC researchers and clinicians with **expertise** in epidemiology, statistics and health services research.

# RESEARCH PRIORITIES



# Research Priorities Include:

- Respiratory illnesses/asthma
- Prediction rules for high stakes/low likelihood diseases
- Medication error reduction
- Injury prevention
- Urgency and acuity scaling

## Research Priorities Include:

- Race, ethnic, class disparities in health
- Mental health
- Treatment of infectious diseases
- Best practices in patient care
- Pain and anxiety management

# Research Priorities Include:

- Education/training outcomes
- Development of treatment algorithms
- Improvement in health outcomes for cardiac arrest
- Practice protocols
- Seizure management
- C-spine immobilization

# PECARN STRUCTURE

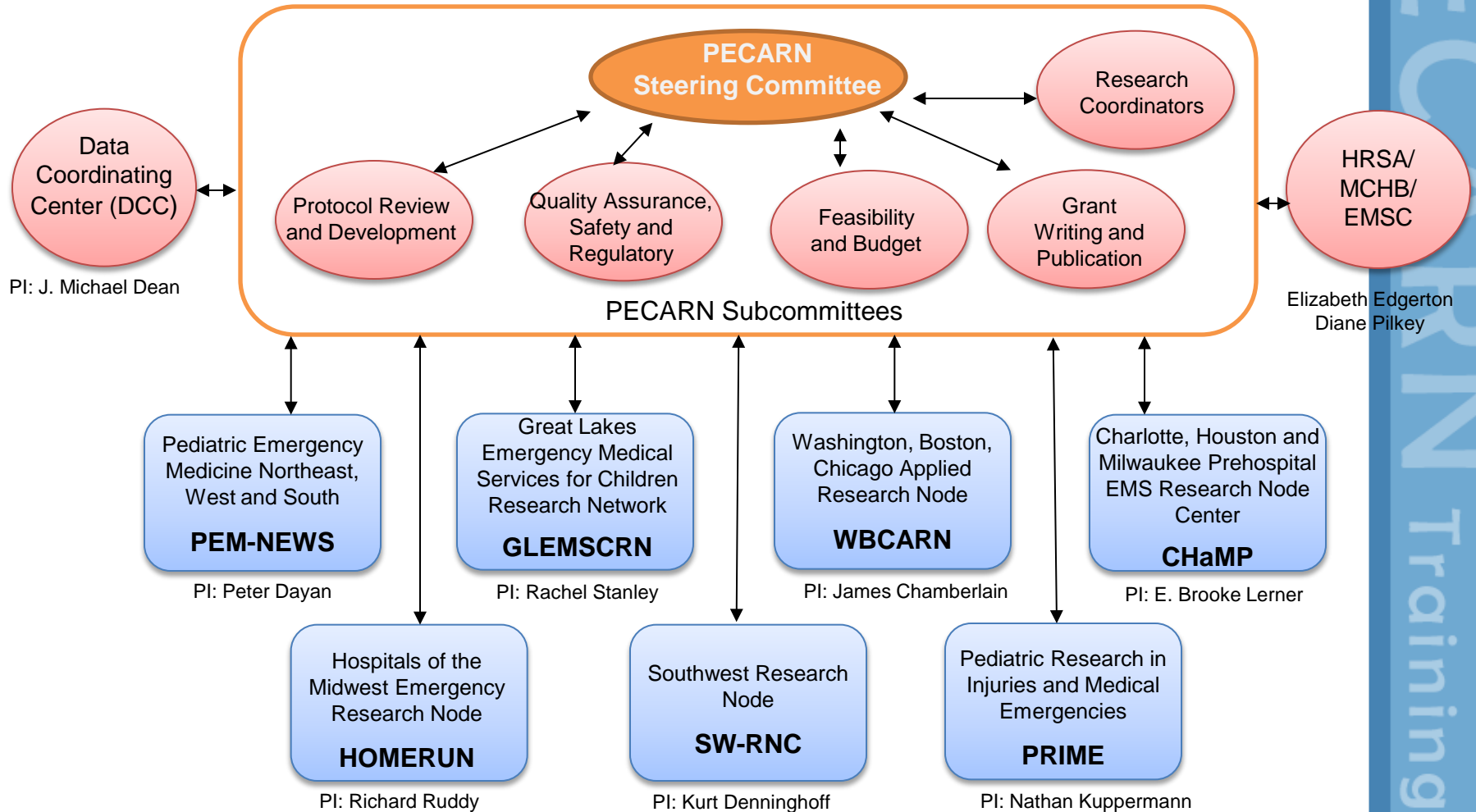




# PECARN consists of:

- A steering committee with representation from each HEDA and the DCC
- Subcommittees to address specific aspects of research

# PECARN – Network Structure



# HOW TO SUBMIT A RESEARCH IDEA

In PECARN, each node works **collaboratively** with the others and with HRSA/MCHB to initiate, implement, and administer network research.

Specific research projects require nodes to obtain **extramural research funding** for a project to be conducted through PECARN.

# Idea submission

- Outside investigators should contact one of the PECARN investigators to express interest in submitting a study idea.
- The general steps for concept approval and protocol development are as follows:

# Steps for Submission

- Contact the PI of a node to discuss an idea
- The node will review and help the PI prepare a concept for consideration to the PECARN steering committee

# Steps for Submission

- After nodal review, submit a 2 page concept paper outlining the study idea to the PECARN Steering Committee (SC) meeting.
- Concept is voted “approved” or “not approved” at the SC meeting.



# Concept Should Address:

1. Why the proposed topic is important to PECARN (refer to PECARN research priorities)
2. Why the study requires a network
3. Brief background
4. Specific aims
5. Brief proposed methodology
6. Subject population
7. Sample size calculation
8. See link for sample concept:  
<http://www.pecarn.org/helpfulResources/pecarnTraining.html>

## If Approved

- Investigator works with DCC and working group to develop concept into protocol
- Protocol is presented at next SC meeting
- Subcommittees provide feedback
- Protocol is revised then voted on by SC for submission as a grant

# Contact Information

For current PECARN contact information, see this link:

<http://www.pecarn.org/contactInfo/index.html>